



Pixcore Impresso

A DYNAMIC

HIGH DEFINITION

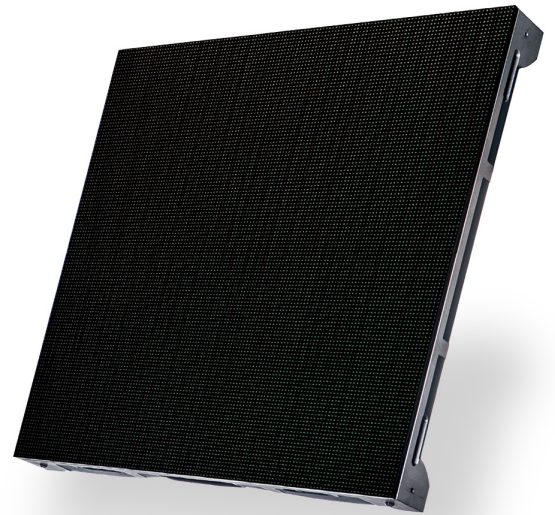
LED DISPLAY

Pixcore Impresso

A DYNAMIC, HIGH DEFINITION LED DISPLAY

The Pixcore Impresso series is a fully front serviceable, economical solution for indoor LED installations while ensuring the high quality standards you expect from Pixcore.

Sizing of the cabinets reduces processing and hardware in each cabinet, ultimately keeping manufacturing costs down. In addition to the tiles simplistic design, it is fully front serviceable making it ideal for wall mount solutions in corporate facilities and much more.



TECHNICAL SPECIFICATION

LED TYPE: SMD 3-IN-1 High brightness 3535

PIXEL PITCH mm: 1.6, 1.9, 2.6, 3.9, 4.8 and 6.0

BRIGHTNESS: ≥ 5000 nits

GREY SCALE: 16bit

DATA REFRESH RATE: ≥ 2880 HZ

CONTROL SYSTEM: NOVA

VIEWING ANGLE VERTICAL: 140° Horizontal 140°

TEMPERATURE RANGE: -20° to +60°

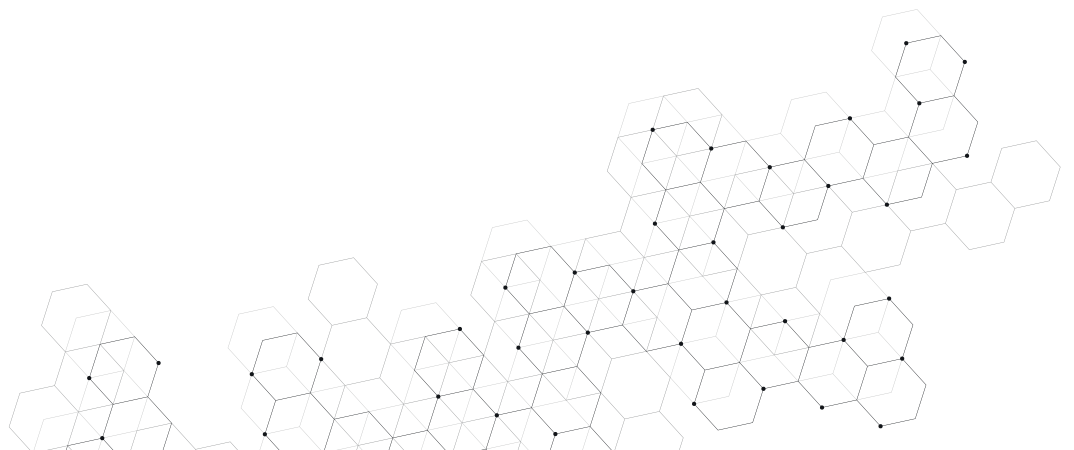
POWER CONSUMPTION: 250w/Max 125w/Average

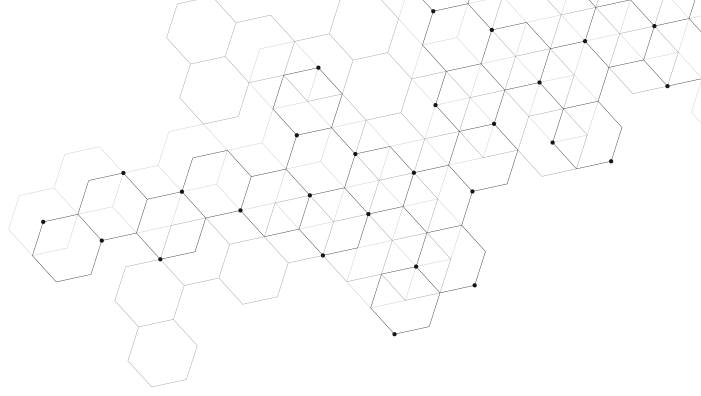
INGRESS PROTECTION: Front: IP65 Rear: IP43

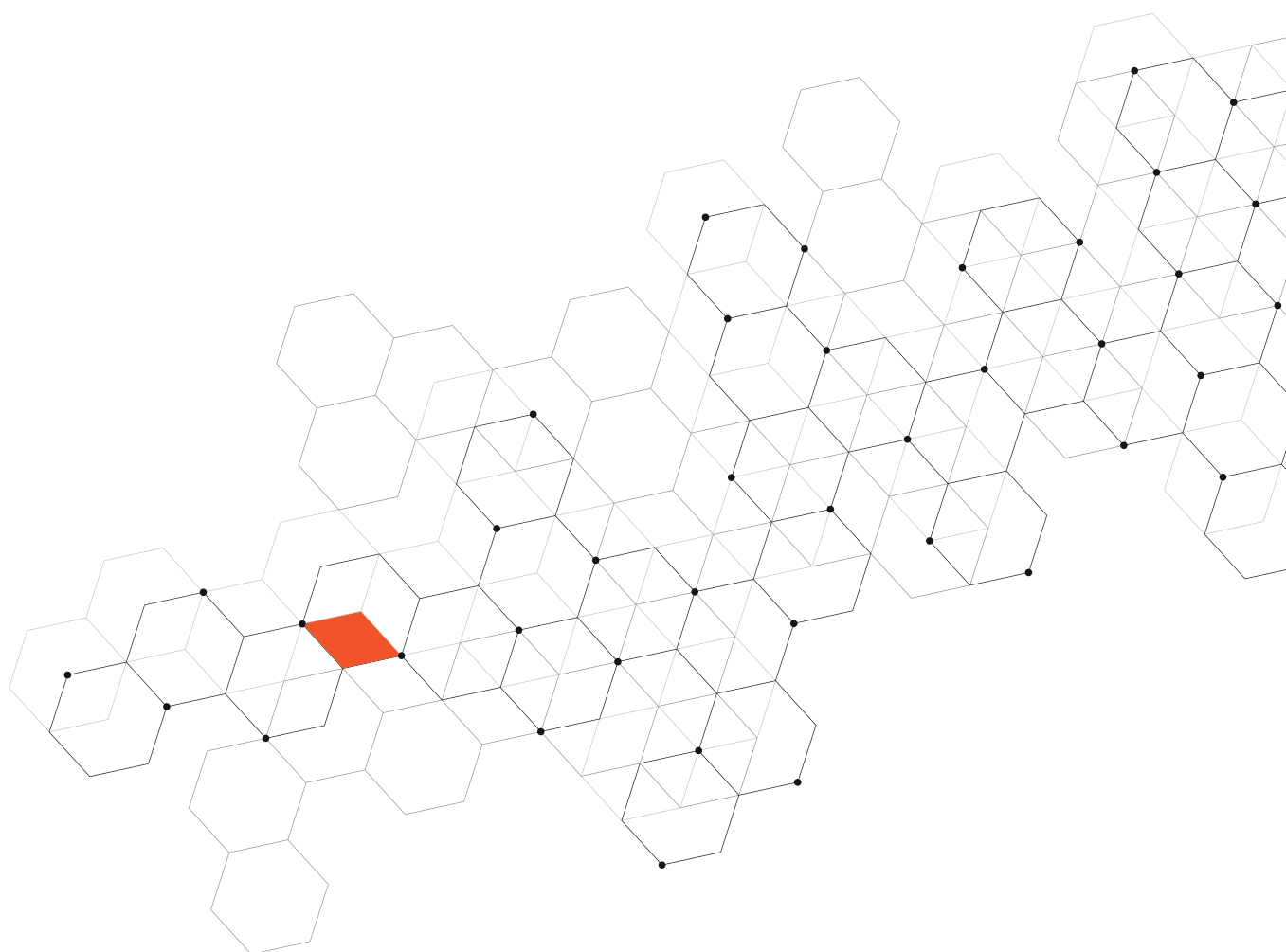
LIFETIME: 75,000hr (50% Brightness)

CERTIFICATION: CE, ROHS, marked

WARRANTY: 12 months







FOR MORE INFORMATION



Mobilgatan 6, 235 39 Vellinge, Sweden +46 (0)40 - 630 90 50 info@2ndplanet.se
www.2ndplanet.se and www.pixcore.se