



# Pixcore Luminato

**A HIGH-RESOLUTION**

**FUTURE PROOF**

**DISPLAY**

---

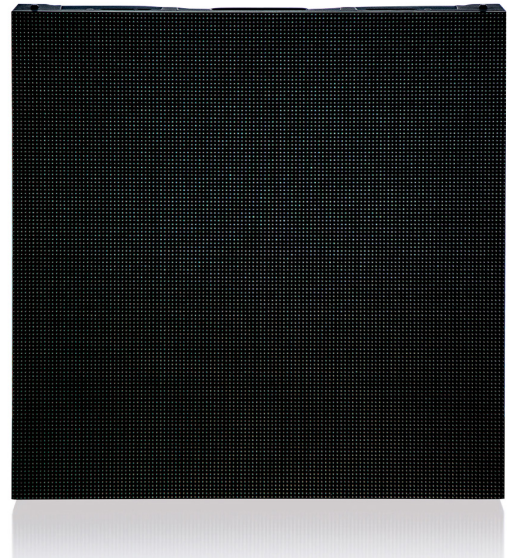
# Pixcore Luminato

## A HIGH-RESOLUTION, FUTURE PROOF DISPLAY

Pixcore Luminato is designed and built to withstand adverse weather conditions and provide a truly breathtaking outdoor display option you can depend on.

Pixcore Luminato can be used as outdoor advertising, entertainment, and much more. Creative designs are no longer bound for indoor use. Pixcore Luminato can create right angles as well as curve up to 45 degrees to meet your creative display needs outdoors.

---



### TECHNICAL SPECIFICATION

LED TYPE: SMD and DIP

PIXEL PITCH mm: 3.9, 4.8, 5.9, 8, 10, 16 and 20

BRIGHTNESS:  $\geq 5000$  nits

GREY SCALE: 16bit

DATA REFRESH RATE:  $\geq 2880$  HZ

CONTROL SYSTEM: NOVA

VIEWING ANGLE VERTICAL: 140° Horizontal 140°

TEMPERATURE RANGE: -20° to +60°

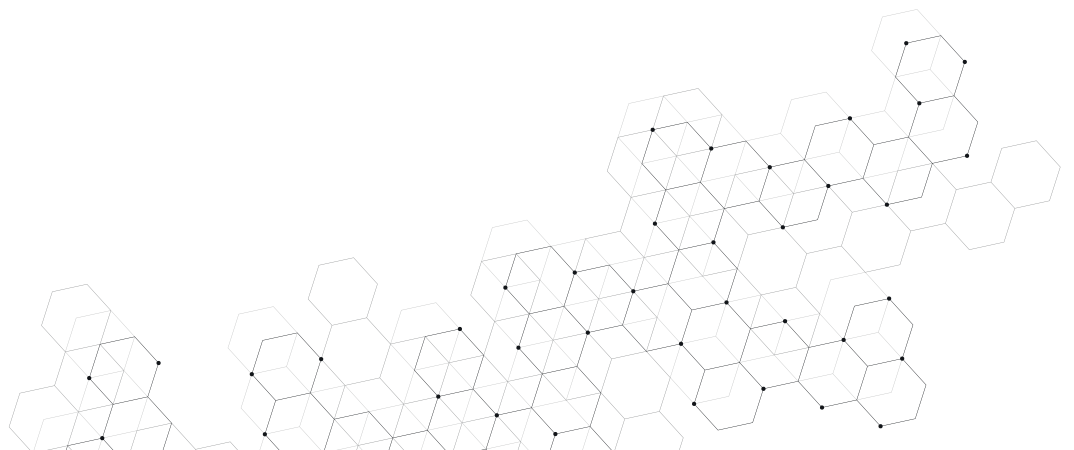
POWER CONSUMPTION: 250w/Max 125w/Average

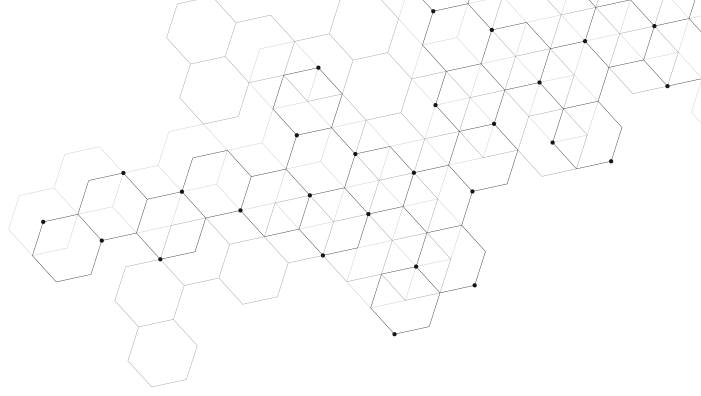
INGRESS PROTECTION: Front: IP65 Rear: IP43

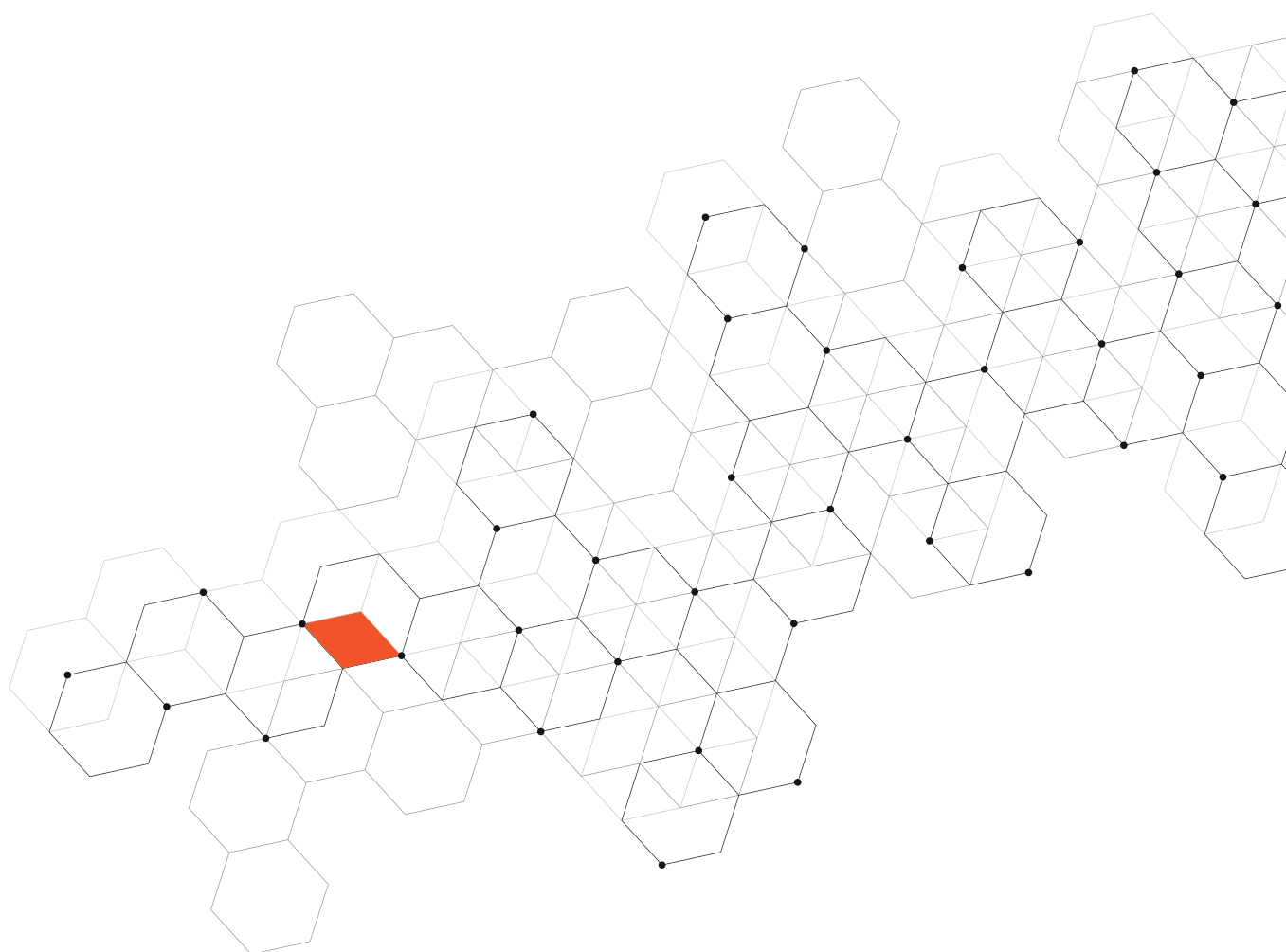
LIFETIME: 75,000hr (50% Brightness)

CERTIFICATION: CE, ETL, FCC

WARRANTY: 12 months







**FOR MORE INFORMATION**



Mobilgatan 6, 235 39 Vellinge, Sweden +46 (0)40 - 630 90 50 [info@2ndplanet.se](mailto:info@2ndplanet.se)  
[www.2ndplanet.se](http://www.2ndplanet.se) and [www.pixcore.se](http://www.pixcore.se)